

# ARCTIC CONSTRUCTION CLUSTER FINLAND

Building a better tomorrow in a changing operating environment

2026



[WWW.RAKENNUSKLUSTERI.FI](http://WWW.RAKENNUSKLUSTERI.FI)



## TABLE OF CONTENTS

<b>Foreword from the Chair</b> .....	<b>3</b>
<b>Executive Director's Review</b> .....	<b>4</b>
<b>The Birth and Growth of the Cluster</b> .....	<b>5</b>
<b>What Is the Construction Cluster?</b> .....	<b>6</b>
<b>Strength in Networks – the Cluster as a Platform</b> ..	<b>7</b>
<b>Divisions</b> .....	<b>8–12</b>
<b>SmartBuiltNorth (SBNorth)</b> .....	<b>13</b>
<b>Concrete Synergy – an innovation platform for the development of low-carbon concrete</b> .....	<b>14</b>
<b>Summary   Sammanfattning   Become a Member</b> .....	<b>15</b>
<b>Members</b> .....	<b>16</b>

## FOREWORD FROM THE CHAIR

*Dear Reader,*

Our aim is to increase awareness of the construction sector in Northern Finland and to promote it both in national and international markets.

Although the volume of construction activity in Finland has continued to decline, and consumer confidence among homebuyers and entrepreneurs has not supported market recovery over the past three years, the activities of the Cluster have remained active and focused on the objectives defined in its strategy. Collaboration has continued with a wide range of stakeholders, and through their networks the Cluster has gained new contacts and increased visibility. The Cluster's leadership has visited Brussels, engaging with industry networks at the heart of decision-making. The strong commitment of Executive Director Elina Yli-Luukko has significantly strengthened the Cluster's visibility and networks for the benefit of the construction sector. In recognition of this valuable work, she was named Construction Engineer of the Year.

I sincerely hope that this publication will inspire you—whether you are a current or future professional in the construction sector—to join our extensive network and contribute to breaking down internal barriers within the industry.

In addition to myself, the Arctic Construction Cluster Finland is supported by several strong and experienced stakeholders from Northern Finland's construction sector, including companies, authorities, and educational institutions. The association currently includes nearly 150 experts in the field, who employ, advise, or educate the future visionaries of the construction industry.

I graduated as a Master of Science in Civil Engineering in Oulu in 1995. I had already been a member of the Cluster for around ten years prior to my current role.

For our members, involvement is never a full-time commitment, but rather a meaningful interest and a genuine passion. In short, the Arctic Construction Cluster Finland is a network that offers clear benefits to its members. The Cluster carries out research-driven, educational, and impactful work for the benefit of the entire construction sector. We have reached a level that is worth maintaining and continuously improving.

You are warmly welcome to join us in advancing northern construction expertise and innovations on the global stage.



*Marko Palonen, Chair 2020-*



## EXECUTIVE DIRECTOR'S REVIEW

Between 2023 and 2025, the Arctic Construction Cluster Finland has taken a significant step forward, driven by the appointment of an Executive Director and the active work of its divisions. During this period, the Cluster has established its position as a key influencer, network builder, and knowledge-sharing platform within the construction sector in Northern Finland. In collaboration with various partners, approximately 25 events, seminars, and webinars are organised annually, bringing together a wide range of industry professionals to discuss current topics such as sustainable construction, digitalisation, and circular economy solutions.

Supporting young construction professionals has been and will remain one of the Cluster's core values. During economically challenging years, we have highlighted concerns regarding the decline in internship and thesis opportunities, as well as its impact on the basic funding of education in the field. We encourage all construction companies to take part in supporting future talent—ensuring that young professionals remain in the industry and in the North.

International cooperation has been a natural part of the Cluster's activities. We have actively built relationships across Northern Sweden, Northern Norway, Ukraine, and as far as Brussels. In autumn 2025, we reached a significant milestone by joining the New European Bauhaus community, opening new opportunities and pathways towards Europe. In addition, the Cluster was once again awarded the Bronze Label quality status following an audit, valid until autumn 2028.

In terms of funding, public projects have consistently accounted for 65–70% of the Cluster's annual income. However, competition for EU project funding has intensified as cohesion funding for Northern Finland has decreased, making direct European cooperation increasingly important—for example, through Horizon Europe projects.

Cooperation with educational institutions lies at the core of the Cluster's activities. We place particular importance on supporting the Department of Civil and Environmental Engineering at the University of Oulu, with which we share strong historical ties. For its members, the Cluster provides up-to-date information, networking opportunities, and a platform to actively contribute to the development of the northern construction sector. We are always open to new ideas and collaboration—welcome to building the future with us.



*Elina Yli-Luukko, Executive Director 2023–, Vuoden 2025 Rakennusalan DI*

# THE BIRTH AND GROWTH OF THE CLUSTER

The Arctic Construction Cluster Finland was established in 2001 in response to an unexpected situation in education. The development of the Cluster into its current form was driven by the fragmented nature of the construction sector and, ultimately, by the expansion of its operating conditions in 2017.

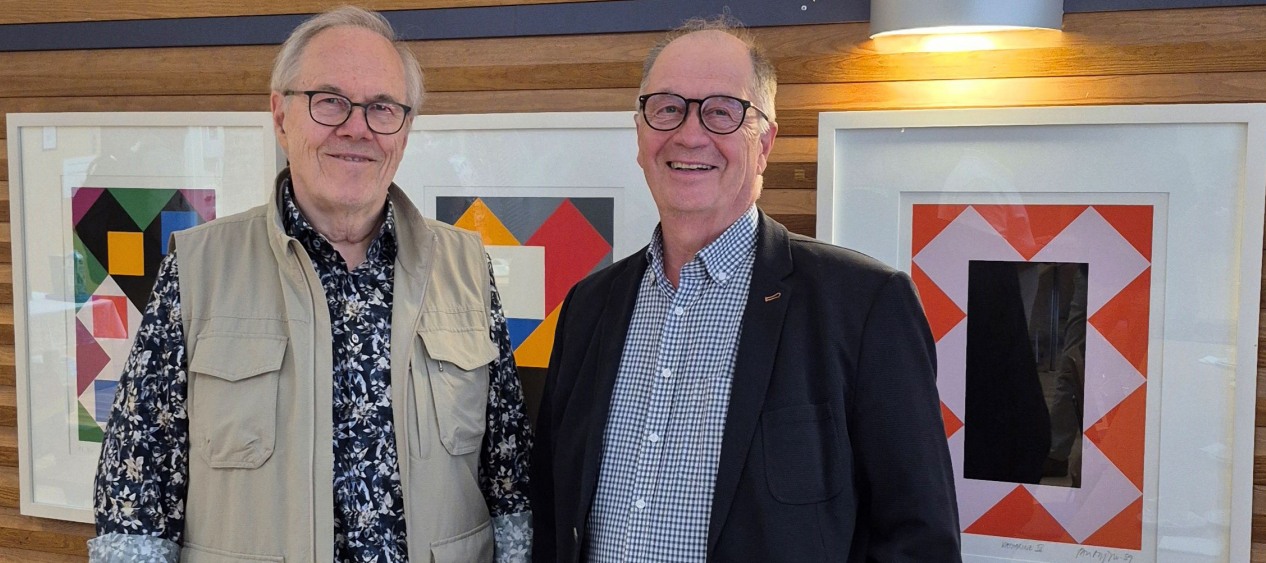
These milestones are significant for Northern Finland as well as for Master's level education in civil engineering at the University of Oulu: in 2001, the programme was discontinued, and in 2017 it was relaunched with the support of the Cluster.

## Discontinuation of education and the birth of the Cluster

The civil engineering programme at the University of Oulu, which had been in operation since 1959,

was discontinued in 2001. This led to increased difficulties in recruiting experts and a reduction in commissioned research, thereby restricting sectoral activity. At the same time, the construction field became further fragmented due to numerous corporate reorganisations.

In response to these changes, the Arctic Construction Cluster Finland was founded in 2001 under the endorsement of seven strong stakeholders. The immediate goal was to support the business community in addressing expert needs. The overarching objective, however, was the reinstatement of the Master's programme in construction engineering at the University of Oulu.



## Growth into one of Northern Finland's largest construction communities and internationalisation

The Cluster achieved its goal in 2017, when a decree from the Ministry of Education reinstated the obligation for education and degree provision in construction and community engineering at the University of Oulu after a nearly 20-year hiatus.

With this new development and the achievement of its long-term objective, the Cluster decided to "rebuild itself completely." Its mission became to assemble the diverse but scattered construction sector into broad collaboration, enhance its operational conditions, and support the implementation of the reinstated education and the broader northern education chain. A completely new element was the involvement of public authorities in Cluster activities.

This led to the creation of a unique eight-sector entity in the construction field, a revitalised and dynamic Cluster,

that now acts as an umbrella for northern construction sector collaboration. The multidisciplinary cooperation model already includes nearly 150 experts or organisations, and its activities continue to expand. The Cluster increasingly participates in and supports project-based collaboration, networks with EU construction communities and stakeholders, and responds to urgent opportunities across the northern Calotte region. It disseminates knowledge and engages internationally as well.

Today, construction education and research rely heavily on collaboration with industry. There is strong demand for such collaboration amid the global transformation of the business environment. This transformation is also managed through numerous regulatory changes, where public authorities act as the most effective guides. In this way, the Cluster's broad work is implemented across the entire northern construction sector.

*Tapani Mäkikyrö,  
Vice Chair 2019–25, Chair 2016–19  
Pekka Pulkkinen,  
Vice Chair 2026–*

# WHAT IS

## THE CONSTRUCTION CLUSTER?

*The Arctic Construction Cluster Finland serves as a meeting platform for construction sectors and its members, as well as an active collaboration network. In its activities, the Cluster monitors sectoral development needs and seeks solutions to address them.*

### **Northern Trendsetter – Influencing the Construction Industry**

In economics, a cluster refers to a concentration of companies and organisations in which the network of actors generates benefits and synergies for its members. Unlike an industry-specific community, cluster members can belong to different but interconnected sectors, while often being geographically located in the same area.

The Arctic Construction Cluster Finland is a tripartite cluster, bringing together construction companies, educational institutions, and public authorities. This tripartite structure makes it an exceptionally broad-based concentration, functioning as a community that drives the construction sector forward. The Cluster's mission is to unite Northern Finland's construction companies, educational institutions, and authorities to work for the benefit of both the construction sector and regional development.

The Arctic Construction Cluster Finland is organised into seven sectoral divisions and two cross-sectoral teams. These units identify the educational, research, and investigative needs that advance their respective sectors, develop solutions, and implement them. This goal-oriented and productive collaboration forms the foundation of the Cluster's operations.

One of the Cluster's key objectives, for the benefit of all its members and the future of the construction sector, is to increase the sector's attractiveness. The aim is to attract new students to the field and enhance Northern Finland's appeal as an employer, including for recent graduates.

At the same time, the Cluster leverages its recognised expertise to strengthen its influence in decision-making. Collaboration with authorities, particularly in regulatory changes as well as quality and value choices, provides added value to all parties. This enables Cluster members to play an increasingly active role in shaping the future of their sector.

Cluster collaboration also creates export advantages for solutions, products, and expertise developed in Northern Finland. These advantages arise, among other factors, from the recognition of the sector's identified competence hubs and the development of leading export products.



## STRENGTH IN NETWORKS – THE CLUSTER AS A PLATFORM

*The Arctic Construction Cluster Finland is a unique platform bringing together three stakeholder groups and their nine sectors. These three groups—companies, educational institutions, and public authorities—form an active collaboration network within the construction sector, which stakeholders can freely utilise for the benefit of both the construction industry and regional development.*

Each sector has its own division, through which the current state of the construction industry is presented from the perspective of sector representatives. Interaction between sectors is organised so that divisions first hold their own meetings three to four times per year. In the Board meetings, held approximately six times a year, sector representatives then take turns presenting new ideas and innovations developed within their divisions.

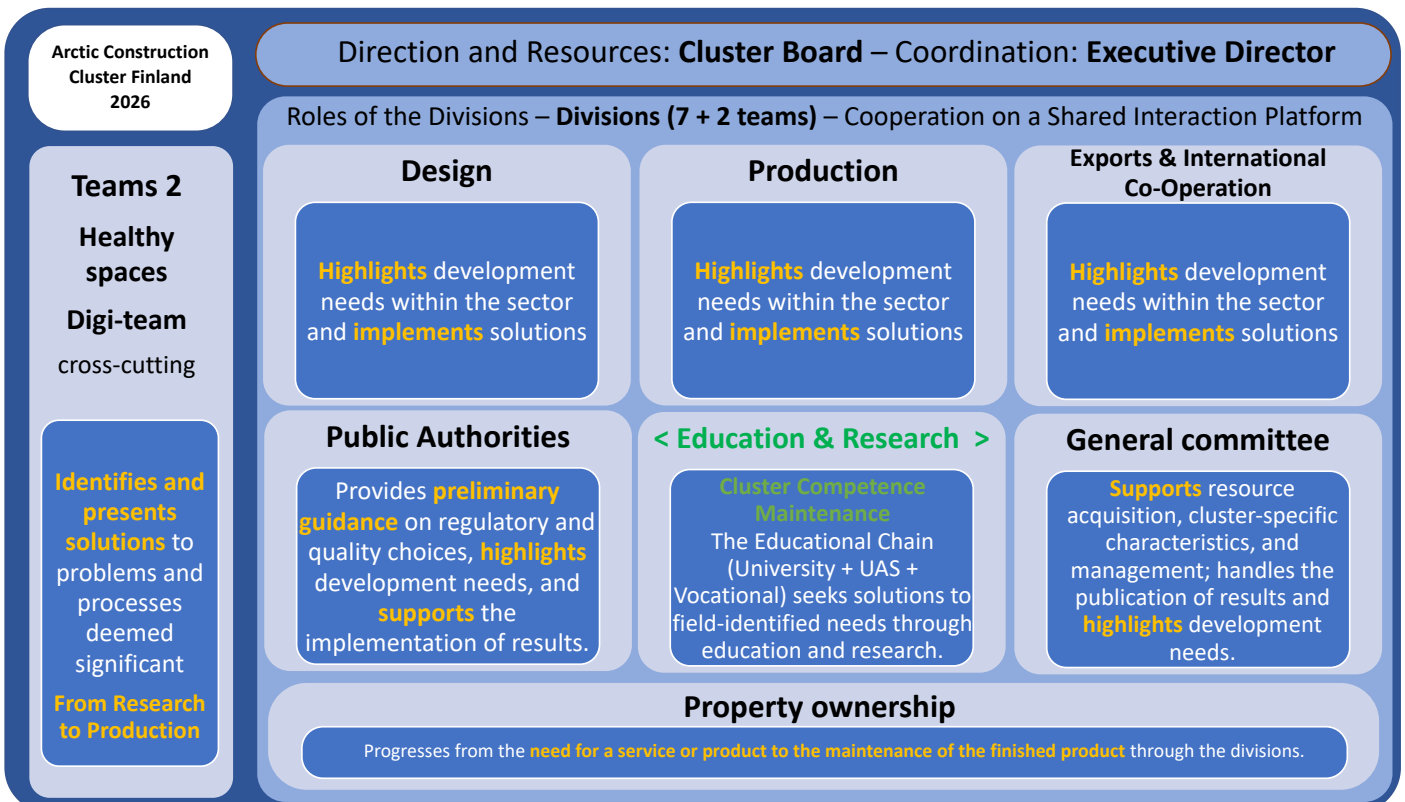
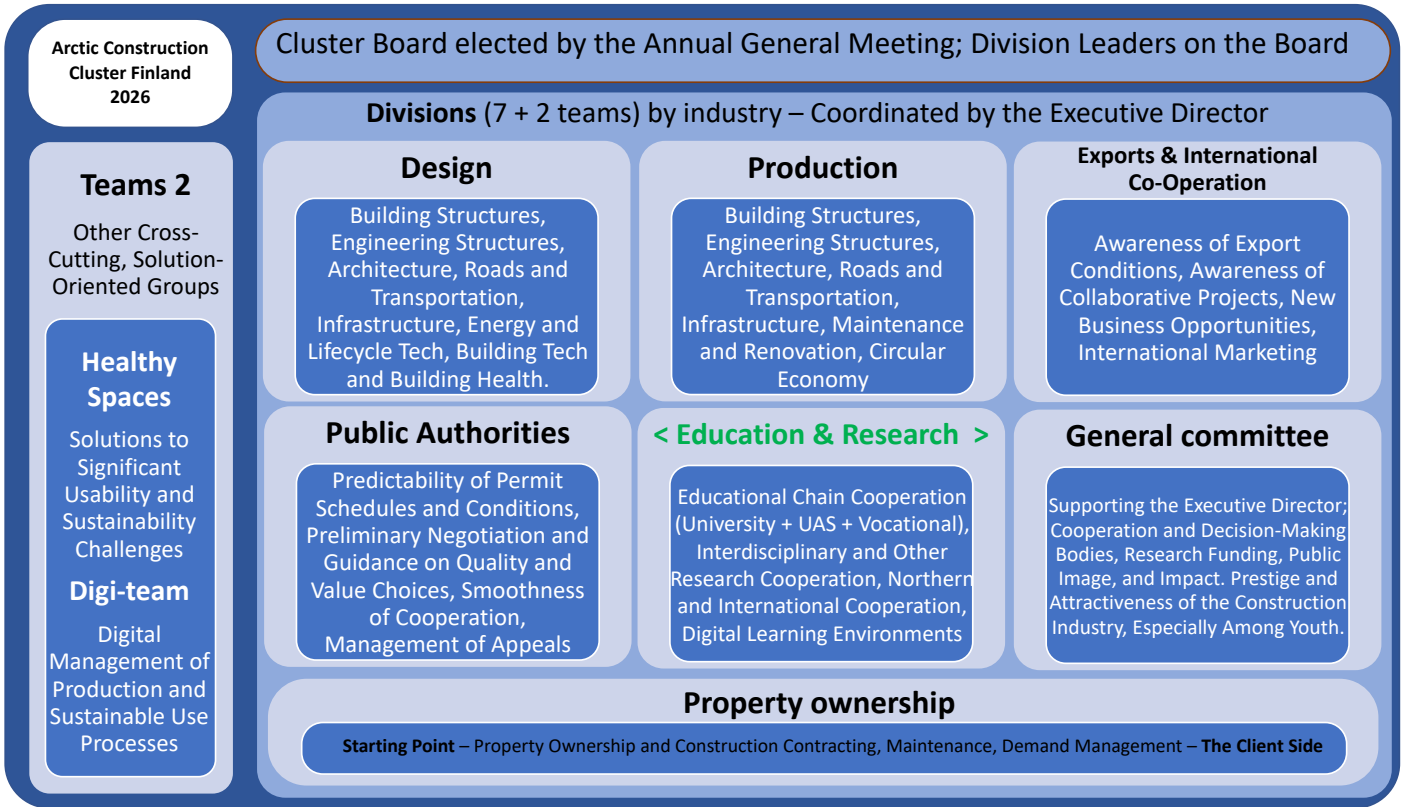
As part of the Cluster network, participants have the opportunity to contribute to the development of future innovations and engage in a variety of other interesting projects. The network is also intended to support members in achieving both personal and business-related objectives.

Through the Cluster, companies can, for example, access legal support from public authorities or recruit trainees into their teams. Students and educational institutions can identify suitable clients for theses or bring new lecturers into classrooms. Public authorities, in turn, gain insight into developments at the core of the industry and how new regulations are perceived.

One of the Cluster's fundamental principles is that all members are represented on an equal footing. Whether a public authority, company executive, construction professional, or student—every opinion matters.

# DIVISIONS

The Arctic Construction Cluster Finland is organised into seven sectoral divisions, which assess and highlight the needs of their respective sectors. In addition to these divisions, the Cluster also includes two cross-sectoral teams: the Healthy Spaces team and the Digi-team.



# DESIGN

## *A Unified Voice for Design from the North*

The Design Division of the Arctic Construction Cluster Finland brings together experts in infrastructure, structural, and architectural design to develop the future of construction from a northern perspective. The division serves as an active forum for discussion and influence, where up-to-date knowledge is shared, sectoral development needs are identified, and solutions are implemented in collaboration with companies, educational institutions, and public authorities.

At the core of its activities are design quality, continuous competence development, and the support of emerging professionals. The division organises regular meetings, lunch seminars, and thematic seminars. Close collaboration with the University of Oulu and other divisions ensures alignment between research, education, and practical design work.

The Design Division offers its members visibility, networks, and the opportunity to influence the development of the built environment across Northern Finland. Join us in advancing design that builds a sustainable and vibrant North.

# PRODUCTION

## *The Driving Force of Northern Construction*

The Production Division is the core of practical execution within the Arctic Construction Cluster Finland—a place where construction professionals, educational institutions, and industry combine their strengths to create the solutions of future construction. Our mission is to ensure that building in the North is safer, more efficient, and smarter than anywhere else.

The Production Division brings together experts in building construction, infrastructure, the construction products industry, and project development to improve site operations and production quality. We highlight best practices, introduce new perspectives, and accelerate sectoral development—from day-to-day site work to strategic leadership.

Key focus areas include safety, material efficiency, digitalisation, and BIM, as well as the development of future talent. Our collaboration with educational institutions ensures a continuous pipeline of motivated professionals in Northern Finland who understand the requirements and opportunities of modern construction.

The Production Division organises annual site visits, inspiring keynote sessions, and thematic events addressing current challenges in construction—whether related to new legislation, the development of safety culture, or the digitalisation of production.

Collaboration with other divisions brings together perspectives from design, education, and public authorities, ensuring that solutions are practical and effective.

The Production Division is the right place for those who want to shape the future of construction—and do so in a way that delivers tangible impact on sites today. Join us in strengthening the competitiveness of northern construction, expanding your networks, and influencing the built environment we create for future generations.



*Join a network  
where execution  
makes the  
difference—and  
where the North  
leads the way.*

# EDUCATION & RESEARCH

## *Building expertise that carries the North into the future*

The Education and Research Division of the Arctic Construction Cluster Finland brings together educational institutions, researchers, companies, and emerging professionals to strengthen the future of the construction sector across the region. The division's objective is to ensure the continued availability of top-level expertise in Northern Finland—both in education and research.

We work in close collaboration with universities, vocational institutions, and construction companies to develop educational content, support research, and promote the employment of new professionals. The division actively highlights competence needs in the construction sector, identifies opportunities for the development of education, and emphasises the role of research in advancing the green transition, digitalisation, and a sustainable built environment.

The division's work is open to all those interested in developing the construction sector in Northern Finland. Join us in building a renewed and responsible foundation of expertise—together, we shape what construction in the North looks like today and in the future.

# EXPORTS & INTERNATIONAL CO-OPERATION

## *Export Opportunities in the Construction Sector*

The Exports & International Co-Operation Division of the Arctic Construction Cluster Finland is responsible for identifying and developing the export opportunities and potential of construction sector actors in Northern Finland, both now and in the future. The division brings together contractors, designers, and educational institutions. Our aim is to jointly identify the strengths of northern construction professionals and bring their expertise to international markets.

The primary market area is naturally the Nordic countries, but the reconstruction of Ukraine is also under active monitoring, with continuous efforts to establish new connections. We aim to link Finnish companies with local Ukrainian partners.

Export capabilities are strengthened through close collaboration with educational institutions and companies in Northern Finland's construction sector. Success in export markets is built on top-level expertise and reliability. The region already has several success stories, including BIM-based design, timber construction, and circular economy solutions. In addition, the region is home to a number of architectural and structural design firms with proven international track records. Together, we create sustainable growth and international opportunities.



*We have also invited young students in the field to participate in the division's activities. Through this, we aim to transfer expertise in international business to future top professionals. Welcome to join our international activities.*

# PROPERTY OWNERSHIP & CONSTRUCTION

*Welcome to join us in developing the real estate and construction sector in Northern Finland together!*

The Property Ownership and Construction Division of the Arctic Construction Cluster Finland is a key regional networking forum that brings together real estate professionals, developers, property owners, and investors. The division serves as an active collaboration platform where members can share experiences, develop their expertise, and influence the future of the regional real estate and construction sector.

At the core of the division's activities is the discussion of topical themes, including energy efficiency and sustainable construction, the challenges of renovation, and the preservation of property value in a changing operating environment. The division actively monitors developments in legislation and regulatory requirements and provides its members with up-to-date insights into sectoral changes.

The division organises regular meetings, expert lectures, and site visits, offering members practical insights to support their work. Networking with other real estate and construction stakeholders in the region is one of the division's key strengths—together, common challenges can be identified and effective solutions developed.



## PUBLIC AUTHORITIES

The Public Authorities Division of Arctic Construction Cluster Finland promotes interaction between the key players in the construction field and public authorities, and supports the activities of the Cluster's various divisions. Through its actions, the Public Authorities Division aims to promote construction quality and the achievement of shared goals for sustainable construction, while taking regional characteristics into account.

The division guides the Cluster's actors in the application and implementation of regulatory changes in construction, as well as in the management of official processes. Through the Cluster's various divisions, the Public Authorities Division receives feedback and insights from the field regarding authority operations. The Public Authorities Division makes the activities and processes of authorities easier to understand by, for example, organizing training events on current topics and visiting different divisions.

The Public Authorities Division can include a wide range of representatives from municipal and state officials in the fields of construction, zoning, and the environment. The operating environment of the Public Authorities Division is practical and solution-oriented.



# DIGI-TEAM

## *Accelerator of Digitalization for the Built Environment in the North*

Arctic Construction Cluster Finland's Digi-Team brings together key players responsible for and interested in the digitalization of the built environment sector—companies, public organizations, research and educational institutions, and technology providers—to strengthen regional competitiveness and build a shared vision of the direction of development. The Digi-Team serves as a practical cooperation forum where barriers and enablers of digitalization are identified, and solutions are integrated into daily operations through projects, experiments, and joint development.

At the core of these activities are the sustainability of the built environment and lifecycle optimization through data. Digitalization is seen as a key instrument in enabling a more energy-efficient,

low-carbon, and resource-wise building stock: reliable data is needed to guide material efficiency, emission reductions, maintenance, and investments toward the most impactful actions. The Digi-Team promotes interoperability, information management, and standards-based practices, while highlighting cybersecurity and resilience as integral parts of a modern built environment—not as separate IT themes. The work is structured around regular team meetings, thematic sessions, and practical case studies.

The central development platform



for the Digi-Team is SmartBuiltNorth (a joint project between Arctic Construction Cluster Finland and Oulu University of Applied Sciences), which strengthens expertise and networks and aims to deepen cooperation between the private and public sectors.

The goal is to create and scale operating models that improve data-driven management, reduce waste, and accelerate the adoption of digital solutions throughout the entire value chain of the built environment—from design and production to maintenance. The Digi-Team offers its members visibility, partnerships, and the opportunity to influence how the northern built environment digitalizes in a sustainable way. Join us in turning digitalization into a competitive advantage—and shifting the focus from procurement price toward lifecycle impacts.

# HEALTHY SPACES TEAM

## *At the Core of Building Functionality*

The Healthy Spaces Team is one of the two cross-cutting teams within the Cluster, seeking solutions to industry challenges by utilizing the expertise and results of the Cluster's other divisions. Construction is a process whose end products are good, functional, safe, and healthy indoor conditions. Achieving healthy spaces during the design and construction phases and maintaining them throughout the entire lifecycle requires a holistic vision across the various stages of the building process, whether in new construction or renovation. It demands success in procurement, design, production, and maintenance. The expertise of the team's specialists covers renovation and maintenance, building technology, indoor conditions, and building health. The team operates in cooperation with the University of Oulu's indoor air group and maintains the strong national and international networks required to ensure high-quality indoor conditions.

Nowadays, work is mainly performed indoors, and the impact of indoor conditions on labor productivity—and consequently on costs—is greater than what can be achieved through sensible energy savings. Indoor air problems frequently arise even in new construction projects.

Indoor conditions are the sum of the combined functionality of structures and building technical systems, and it is vital that different systems work well together. The importance of building technology and building automation is emphasized.

The Healthy Spaces Team operates at the core of building functionality and the factors affecting it. The team's meetings feature prominent experts from various fields and equipment manufacturers as speakers. By following and participating in the team's activities, members have the opportunity to stay up to date with the latest knowledge and developments.





**SmartBuiltNorth (SBNorth)** is a joint project between Arctic Construction Cluster Finland and Oulu University of Applied Sciences, aiming to strengthen the low-carbon footprint, productivity, and competitiveness of the built environment in Northern Finland through digitalization. The project will be implemented between January 2026 and June 2027.

The built environment is a key part of regional vitality and the achievement of climate goals. Changes in the operating environment, tightening regulation, information management requirements, and growing expectations for efficiency and quality require systematic development from the entire built environment sector. This transformation broadly affects property owners, developers, designers, contractors, technology providers, and public actors. Individual solutions are not enough; coordinated cooperation and shared operating models are required.

SBNorth brings together private and public sector actors for joint development work. The project promotes practical pilots, the development of information management and digital practices, and the strengthening of expertise. The goal is to improve data quality, transparency, and usability throughout the building's entire lifecycle—from design and construction to operation and maintenance.

The project serves as a regional cooperation platform where the industry's key development needs are identified and solutions are put into practice. The development work emphasizes openness, scalability, and usability even after the project's conclusion. At the same time, it strengthens the capabilities of Northern Finnish actors to meet national and international requirements and to utilize new digital operating models to improve competitiveness.

SmartBuiltNorth supports the built environment's transition toward low-carbon and resource-efficient operations. Through digitalization, the quality of decision-making can be improved, overlapping work reduced, processes streamlined, and opportunities for data-driven management increased. This creates the conditions for sustainable investments and long-term regional development.

SBNorth offers actors in the built environment sector the opportunity to participate in joint development, influence regional solutions, and strengthen their own expertise as part of a broader network.



# CONCRETE SYNERGY – INNOVATION PLATFORM

## FOR LOW-CARBON CONCRETE DEVELOPMENT

*The construction industry plays a key role in the fight against climate change, and the manufacturing of concrete in particular accounts for a significant portion of the sector's carbon dioxide emissions. The development of low-carbon concrete has therefore emerged as one of the most important areas of research and innovation, combining scientific research, industrial development, and the principles of circular economy.*

Research organizations and universities are key actors in the project. They provide academic knowledge, research skills, and testing methods used to develop new materials and technologies for the use of low-carbon concrete. The involvement of the scientific community ensures the project's scientific validity and innovation—in other words, the validity of the project's results.

From an industrial perspective, the project focuses particularly on the development of concrete and cement by utilizing side streams from various industries. These include materials generated in the steel, mining, energy, and forest industries, which can be used as partial replacements for traditional cement. Utilizing side streams reduces the need for virgin raw materials, decreases the amount of waste, and can significantly lower the carbon dioxide emissions of concrete compared to conventional solutions.

Collaboration between different industrial sectors is crucial in the development of new materials. When side streams are efficiently directed toward reuse, circular economy, resource efficiency, and corporate competitiveness are simultaneously promoted. However, development work requires continuous research and testing to ensure the technical functionality of materials and compliance with construction requirements. The project has a broad societal impact. The public sector can utilize the developed solutions in its own construction projects, supporting environmental goals and sustainability strategies.

Financiers and investors, in turn, can assess the market potential of low-carbon construction solutions and promote sustainable development by directing capital toward environmentally friendly innovations. Educational institutions can integrate the project's results into their teaching, strengthening the expertise of future professionals in the field of sustainable construction. Citizens and communities benefit indirectly from the development work through a cleaner environment, a better living environment, and increasing employment opportunities. At the same time, environmental organizations and other stakeholders can participate in disseminating results and promoting sustainable practices.

The project aims to gather fragmented expertise into a single national innovation network and expand cooperation to actors in Northern Sweden and Northern Norway. At the core is the development and piloting of a database model for industrial side streams, enabling the efficient and scalable utilization of these materials in the production of low-carbon concrete. Additionally, regulatory frameworks are examined with the aim of promoting the faster adoption of new solutions.

The development of low-carbon concrete from industrial side streams is a timely and necessary step toward a more sustainable built environment. By combining the needs of research, industry, and society, solutions can be created that reduce the construction sector's carbon footprint, support the circular economy, and open new business and export opportunities for the future.

## SUMMARY

This booklet entails the story behind the creation and operations of the most comprehensive network in Northern Finland's construction industry, the Arctic Construction Cluster Finland. The cluster consists of a board, seven divisions and two multi-dimensional teams, which cover a wide range of construction areas. You can find advertisements for the divisions in the brochure and learn about our activities in the different divisions. The aim of the Arctic Construction Cluster Finland is to raise awareness of the excellence of

the northern construction industry both nationally and internationally.

We strive to share this expertise with Sweden, Norway and other Nordic countries to the best of our ability. The Arctic Construction Cluster Finland currently has two ongoing projects: Concrete synergy, where our aim is to promote the development of low-carbon concrete and the circular economy by creating a national and Nordic innovation network, and SBNorth, where we promote a low-carbon built environment in Northern Finland through digitalization and artificial intelligence.

We are constantly trying to find and explore project ideas that can support our members and the construction industry in Northern Finland. Everyone is welcome to join the Cluster as themselves, to pursue matters that are important to them. After all, everyone is just as unique as an individual as the cluster is as a cooperation network.

## SAMMANFATTNING, NORRA FINLANDS BYGGKLUSTER RF.

Denna broschyr beskriver om Norra Finlands mest omfattande byggnätverkets verksamhet och hur verksamheten uppstod. Klustret består av en styrelse, sju avdelningar och två flerdimensionella team, som täcker ett brett spektrum av byggområden. Du kan hitta annonser för avdelningarna i broschyren och lära dig mer om vår verksamhet inom de olika avdelningarna. Arctic Construction Cluster Finlands mål är att öka medvetenheten om den norra byggbranschens spetskompetens både

nationellt och internationellt.

Vi strävar efter att dela denna expertis med Sverige, Norge och andra nordiska länder efter bästa förmåga. Arctic Construction Cluster Finland har för närvarande två pågående projekt: Betongsynergi, där vårt mål är att främja utvecklingen av koldioxidsnål betong och den cirkulära ekonomin genom att skapa ett nationellt och nordiskt innovationsnätverk, och SBNorth, där vi främjar en koldioxidsnål byggd miljö i norra Finland genom digitalisering och artificiell intelligens.

Vi försöker ständigt hitta och utforska projektidéer som kan stödja våra medlemmar och byggbranschen i norra Finland. Alla är välkomna med i klustret som sig själva och att driva ärenden som är viktiga för dem. Vi är ju alla lika unika individer som Byggklustret är som ett samarbetsnätverk.

## BECOME A MEMBER

Arctic Construction Cluster Finland is a registered association, and becoming a member is easy. You can directly contact the representative of the division you are interested in and express your interest in participating in its activities. If you are not yet sure through which division you or your company would have the most to offer to the Cluster or gain from it, you can discuss the matter by phone with the Executive Director.

The membership application is processed at a meeting of the Cluster's Board of Directors, and new members are approved once the association's rules and operating principles are met. Following the Board's decision, you will be a full member of the Cluster and ready to contribute your share to promoting construction expertise in Northern Finland! In 2025, the Cluster's membership fee was €50 for individual members and €500 for corporate and organizational members.

# MEMBERS

Arctic Construction Cluster Finland,  
corporate, organizational and individual members.  
March 17, 2026

## Companies

AFRY Finland Oy  
Anfra Oy  
A-Insinöörit Rakennuttaminen Oy  
A-Insinöörit Suunnittelu Oy  
alt Arkkitehdit Oy  
Are Oy  
Arkkitehtitoimisto HML Oy  
BusinessOulu, Oulun kaupungin liikelaite  
Caverion Suomi Oy  
Cor Group Oy  
Ewona  
Geobotnia Oy  
Oy Crosslam Kuhmo Ltd  
Hartela Pohjois-Suomi Oy  
Haurun Jäteauto Oy  
Helamaa&Heiskanen Arkkitehtitoimisto  
Iilaakso Oy  
Inspector Sec Oy  
IP Heikkilä Oy  
Kastelli-talot Oy  
Kiertokaari Oy  
Kiiruna Talot  
Lamit Oy  
Lujatalo Oy  
Lukkaroinen Arkkitehdit Oy  
Luo arkkitehdit Oy  
LähiTapiola Kiinteistövarainhoito Oy  
NCC Oy  
Nordec Oy  
Oulun Pysäköinti Oy  
Oulun Sivakka Oy  
Pohjois-Suomen Kiinteistösi joitus Oy  
Pohjolan Osuuspankki  
PolarHouse Oy  
Potential Toimitilat Oy  
Puolustuskiinteistöt-liikelaitos  
Rakennusliike Lapti Oy  
Rakennusteho Oy  
Ramboll Oy  
Ruskon Betoni Oy  
Ruukki Construction Oy  
Salvos Oyj  
Sitowise Oy  
Skanska Oy  
Sofigate Oy  
Stenger & Ibsen Construction Finland Oy  
Suomen Rakennustuote Oy  
Sweco Finland Oy  
ThermiaHirsi Oy  
Technopolis  
UKI-arkkitehdit Oy  
Vison Oy  
Welado Oy  
WSP Finland Oy  
YIT Suomi Oy  
YIT Suomi Oy Elinkaarihallinta  
Ylitornion Betonituote YBT Oy

## Associations, organizations, foundations

Hengitysliitto ry  
INFRA ry Pohjoinen  
Otokylä ry  
Oulun Kauppakamari  
Pohde, tilapalvelut  
Pohjois-Suomen Opiskelija-asuntosäätiö PSOAS  
Rakennusteollisuus RT ry  
Rakli ry

## Governmental/public authorities

Kempeleen kunta, kiinteistöt  
Limingan kunta  
Muhoksen kunta, kiinteistöt  
Oulun Seurakuntayhtymä, kiinteistöpalvelut  
Pudasjärven kehitys Oy  
Rakennusvalvonta, Oulun kaupunki  
Utajärven kunta  
Yhdyskunta- ja ympäristöpalvelut YYP, Oulun kaupunki

## Education and research

Centria ammattikorkeakoulu Oy  
Kajaanin ammattikorkeakoulu Oy  
Lapin ammattikorkeakoulu Oy  
Oulun ammattikorkeakoulu Oy  
Oulun seudun ammattiopisto OSAO Oy  
Oulun yliopisto, Arkkitehtuurin yksikkö  
Oulun yliopisto, Rakennus- ja yhdyskunta-  
tekniikka  
Oulun yliopisto, Tuotantotalous  
Oulun yliopisto, Kiertotalous

## Individual members

Number of individual members: 27.

Aho Timo, TkT, kunniajäsen  
Airaksinen Olli, DI, RI  
Antikainen Matti, DI  
Aurinko Hannu, TkT  
Hienonen Markku, RI  
Junttila Ahti, Rakennusneuvos  
Järvenpää Esko, TkT, kunniajäsen  
Kauppinen Timo, DI  
Kääriäinen Hannu, DI  
Martimo Elina, KTM  
Mäkikyrö Tapani, TkT h.c. Kunniapuheenjohtaja  
Mäläskä Markku  
Pennanen Matti, DI, Kaupunkineuvos  
Puurula Arto, TkT  
Rissanen Jouni, TkT  
Rousu Sanna, TkT  
Seppälä Jaakko, DI  
Seppälä Pekka, TkL  
Talvitie Mari-Leena, DI  
Teppo Esa, DI  
Tulla Kauko, TkL

## Board of Directors, Executive Director

Marko Palonen, Chairman  
Pekka Pulkkinen, Vice Chairman  
Tomi Makkonen, Expert  
Tapani Mäkikyrö, Expert  
Timo Aho, Expert  
Esko Järvenpää, Expert  
Elina Yli-Luukko, Executive Director

The 1st leader of the Division is a board member  
and the 2nd leader is a deputy member

## Divisions

### Design

Building Structures, Engineering Structures,  
Architecture, Roads and Transportation, Other  
Infrastructure, Energy and Lifecycle Technology,  
Building Technology, and Building Health.

1st Leader: Marko Karkulehto Sweco Finland Oy,  
marko.karkulehto@sweco.fi  
2nd Leader: Janne Pihlajaniemi, Oulun Yliopisto,  
janne.pihlajaniemi@oulu.fi

### Production

Buildings and Bridges, Roads and Other  
Infrastructure, Maintenance and Repair, Circular  
Economy.

1st Leader: Sakari Jämsä, Skanska  
Talonrakennus Oy, sakari.jamsa@skanska.fi  
2nd Leader: Tero Kivioja, Kastelli-talot Oy,  
tero.kivioja@kastelli.fi

## Exports and international cooperation

Export Condition Awareness, Collaboration Project  
Awareness, New Business Opportunities,  
International Marketing

1st Leader: Pekka Pulkkinen, Pohjois-Suomen  
rakennuskusteri ry, pekka.pulkkinen7@outlook.com  
2nd Leader: Mikko Heikkinen, UKI Arkkitehdit Oy,  
mikko.heikkinen@ukiark.fi

## Education and research

Collaboration within the Educational Chain:  
University + University of Applied Sciences +  
Vocational Schools, Cluster Competence  
Maintenance, Interdisciplinary Research  
Collaboration, Northern and International  
Collaboration, Virtual Collaboration Models,  
Ouka Research Collaboration

1st Leader: Matti Toppi, OAMK,  
matti.toppi@oamk.fi  
2nd Leader: Anne Tuomela, Oulun yliopisto,  
anne.tuomela@oulu.fi

## Governmental action

Predictability of Permit Decision Schedules and  
Conditions, Pre-consultation and Guidance on  
Quality and Value Choices, Smooth Collaboration,  
Minimization and Management of Appeals.

1st Leader: Anu Montin, OUKA, anu.montin@ouka.fi  
2nd Leader: Markku Hienonen, Pohjois-Suomen  
rakennuskusteri ry, markku.hienonen@gmail.com

## General Committee

Cluster's Connections to Administrative Decision-  
Making and Research Funding Agencies, Interface  
with Society, Public Image, and Impact. Appreciation  
and Attractiveness of the Construction Industry,  
Recruitment of Young People and Students.

1st Leader: Juha Mäntynen, Rakennusteollisuus RT  
ry, juha.mantynen@rakennusteollisuus.fi  
2nd Leader: Tapani Mäkikyrö, Pohjois-Suomen  
Rakennuskusteri ry, tapani.makikyro@gmail.com

## Team - healthy spaces

An interdisciplinary, solution-focused group  
that seeks solutions to significant problems  
utilizing different sections, "from research to  
production." Current problem area: Damages -  
Healthy Spaces.

1st Leader: Timo Kauppinen, P-S:n  
Rakennuskusteri ry, tkk@mutsal.fi  
2nd Leader: Ville Sormunen, YIT Suomi Oy,  
Elinkaarihallinta, ville.sormunen@yit.fi

## Property ownership

Property Ownership, Construction Management,  
Maintenance and Demand Control. The client  
entity progresses from the need for a service or  
product to the finished product by utilizing the  
offerings of different sections.

1st Leader: Ari-Matti Jänkälä, A-Insinöörit  
Rakennuttaminen Oy, ari-matti.jankala@ains.fi  
2nd Leader: Raimo Hätälä, Oulun Sivakka Oy,  
raimo.hatala@sivakka.fi

## Digi-team

1st Leader: Markus Junttila, Sofigate Oy,  
markus.junttila@sofigate.com  
2nd Leader: Saara Paavola, IP-Heikkilä Oy,  
saara.paavola@ip-heikkila.fi

A network diagram graphic in the top left corner, consisting of a complex web of interconnected nodes and lines. The nodes are represented by small circles in various shades of blue and grey, and the lines are thin, light blue and grey. The network is denser in the top left and fades out towards the right and bottom.

# **ARCTIC CONSTRUCTION CLUSTER FINLAND**

[WWW.RAKENNUSKLUSTERI.FI](http://WWW.RAKENNUSKLUSTERI.FI)